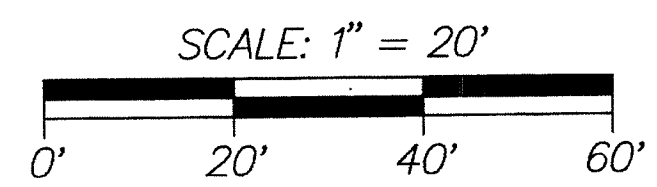


COUNTY OF PALM BEACH  
STATE OF FLORIDA  
THIS PLAT WAS FILED FOR RECORD AT \_\_\_\_\_  
THIS \_\_\_\_\_ DAY OF \_\_\_\_\_  
20\_\_\_\_ AND DULY RECORDED IN PLAT BOOK NO. \_\_\_\_\_  
ON PAGE \_\_\_\_\_  
SHARON R. BOCK, CLERK AND COMPTROLLER  
BY \_\_\_\_\_, D.C.



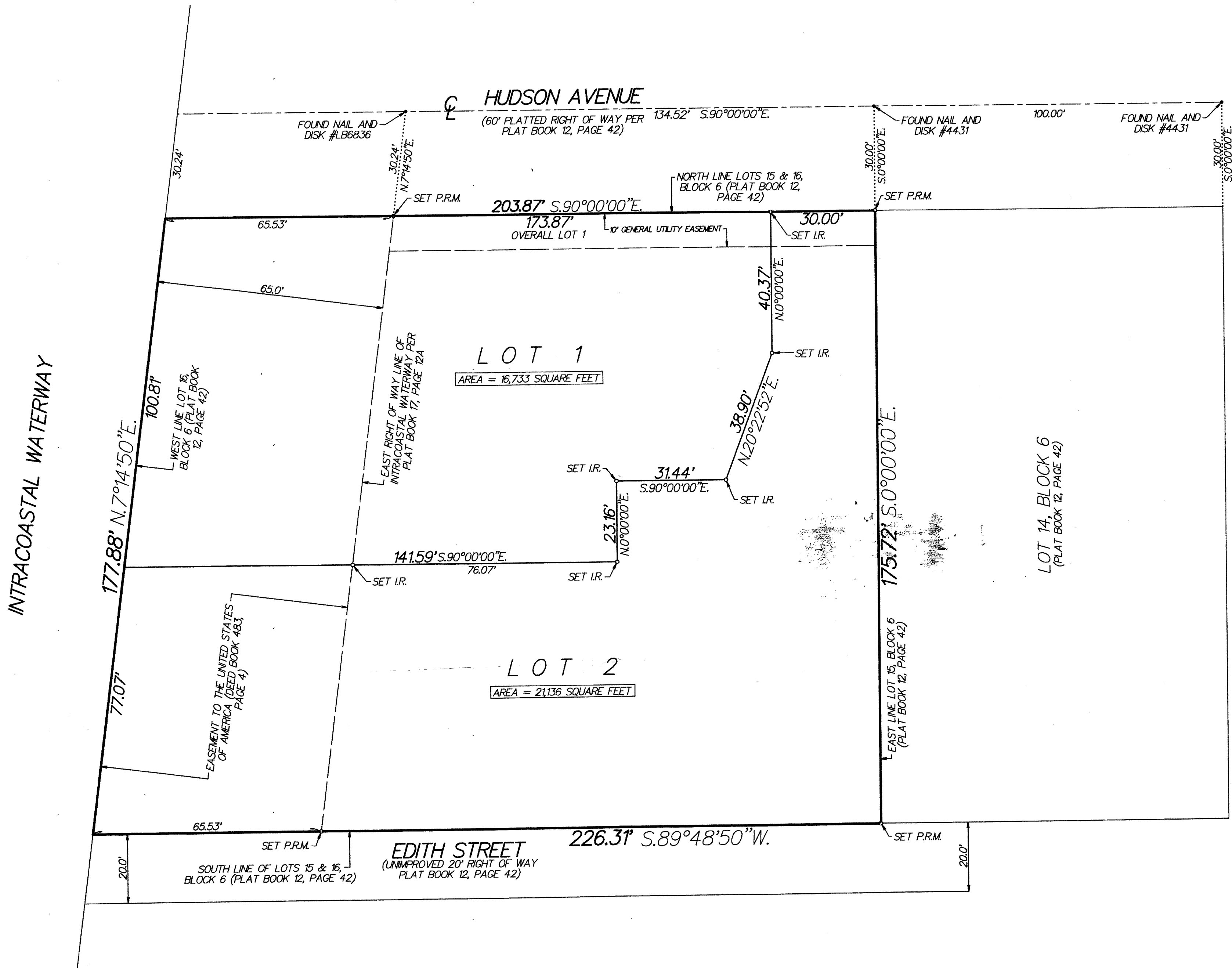
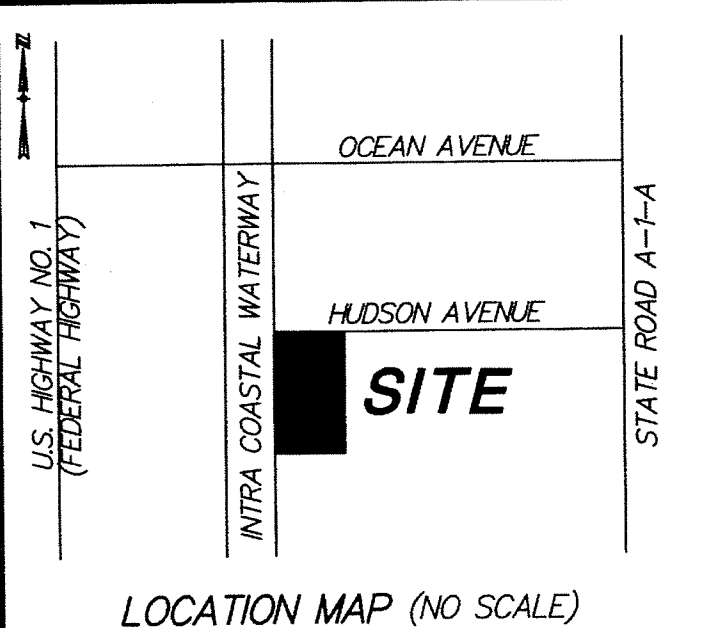
LEGEND:  
CL = CENTERLINE  
P.R.M. = PERMANENT REFERENCE MONUMENT (4"x4" CONCRETE MONUMENT STAMPED "PRM LB353") UNLESS STATED OTHERWISE  
I.R. = 5/8" IRON ROD WITH CAP #LB 353

# HUDSON AVENUE ESTATES

BEING A REPLAT LOTS 15 AND 16, BLOCK 6, BOYNTON BEACH PARK, ACCORDING TO THE PLAT THEREOF AS RECORDED IN PLAT BOOK 12, PAGE 42, BEING IN SECTION 27, TOWNSHIP 45 SOUTH, RANGE 43 EAST, TOWN OF OCEAN RIDGE, PALM BEACH COUNTY, FLORIDA

MARCH 2013  
SHEET 2 OF 2

THIS INSTRUMENT WAS PREPARED BY PAUL D. ENGLE, IN THE OFFICE OF O'BRIEN, SUTER & O'BRIEN, INC., 955 N.W. 17TH AVENUE, SUITE K-1, DELRAY BEACH, FLORIDA 33445 (561) 276-4501



INTRACOASTAL WATERWAY

177.88' N.7°14'50"E.

100.81'

77.07'

WEST LINE LOT 16, BLOCK 6 (PLAT BOOK 12, PAGE 42)

EASEMENT TO THE UNITED STATES OF AMERICA (SEE BOOK 483, PAGE 4)

EAST RIGHT OF WAY LINE OF INTRACOASTAL WATERWAY PER PLAT BOOK 17, PAGE 12A

LOT 1  
AREA = 16,733 SQUARE FEET

LOT 2  
AREA = 21,136 SQUARE FEET

HUDSON AVENUE  
(60' PLATTED RIGHT OF WAY PER PLAT BOOK 12, PAGE 42)

203.87' S.90°00'00"E.

173.87' OVERALL LOT 1

141.59' S.90°00'00"E.

EDITH STREET  
(UNIMPROVED 20' RIGHT OF WAY PLAT BOOK 12, PAGE 42)

226.31' S.89°48'50"W.

NORTH LINE LOTS 15 & 16, BLOCK 6 (PLAT BOOK 12, PAGE 42)

30.00'

31.44' S.90°00'00"E.

23.16' N.0°00'00"E.

40.37' N.0°00'00"E.

38.90' N.20°22'32"E.

175.72' S.0°00'00"E.

EAST LINE LOT 15, BLOCK 6 (PLAT BOOK 12, PAGE 42)

20.00'

FOUND NAIL AND DISK #LB6836

FOUND NAIL AND DISK #4431

FOUND NAIL AND DISK #4431

SET P.R.M.

SET P.R.M.

SET P.R.M.

SET P.R.M.

SET I.R.

SET I.R.

SET I.R.

SET I.R.

SET I.R.

SET I.R.

SET I.R.

SET I.R.

SET I.R.

SET I.R.

SET I.R.

SET I.R.

SET I.R.

SET I.R.

SET I.R.

SET I.R.

SET I.R.

SET I.R.

SET I.R.

SET I.R.

SET I.R.

SET I.R.

SET I.R.

SET I.R.

SET I.R.

SET I.R.

SET I.R.

SET I.R.

SET I.R.

SET I.R.

SET I.R.

SET I.R.

SET I.R.

SET I.R.

SET I.R.

SET I.R.

SET I.R.

SET I.R.

SET I.R.

SET I.R.

SET I.R.

SET I.R.

SET I.R.

SET I.R.